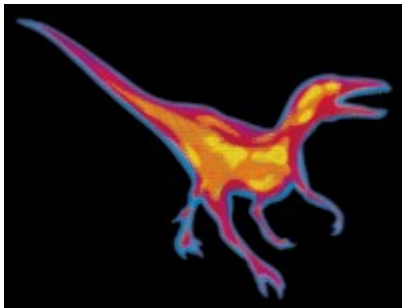


B|B|C Walking With Dinosaurs



[Installing and Running](#)

[User Guide](#)

Click the white links above for information on installing, running and using your CD-ROM. Or visit [http://www.bbc.co.uk/1/1/1999/08/080801cdrom.shtml](#) for the latest information on this and other BBC Multimedia titles. (Having clicked this link please close down this electronic booklet window and quit the Walking with Dinosaurs menu in order to view the web site).

B|B|C Minimum System Requirements

The Walking with Dinosaurs CD-ROM requires the following minimum system to work correctly:

- A multimedia PC with Pentium P200 processor and 64 MB of RAM
- At least 50 Megabytes of free space on your hard disc
- Eight speed CD-ROM drive
- High-colour (16-bit) display
- Sound Blaster 16 sound card (or 100% compatible)
- Suitable loudspeakers or headphones
- Mouse or other pointing device
- Windows® 95 or 98

B|B|C Installation Instructions

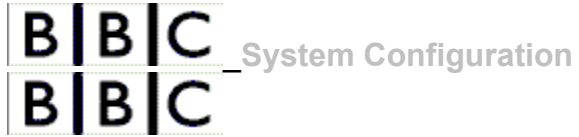
Ensure that Microsoft Windows is running with no other applications open, then insert the Walking with Dinosaurs CD-ROM into your CD-ROM drive.

If Autorun is enabled on your computer, the installation program will start after a few seconds. You should then follow the instructions from point 'b' below, if you do not have an Autorun facility go to point 'a' below.

- a From your Windows desktop, choose **Start** and then **Run**. Type D:\SETUP.EXE in the box labelled **Open**, then click the **OK** button. (If your CD-ROM drive is not drive D, substitute the correct drive letter.)
- b You should then follow the instructions that appear on screen. If in doubt, choose the default options as you proceed through the installation.

B|B|C Running Walking with Dinosaurs

Once it is installed, you can run Walking with Dinosaurs by selecting Start, Programs, BBC Walking with Dinosaurs then BBC Walking with Dinosaurs again. If you have Autorun enabled, simply remove then reinsert your CD-ROM.



Please ensure that you run Walking with Dinosaurs with your display set to High colour (16 bit) and that you are using the latest drivers available from your hardware supplier. If you need to change any settings, refer to the documentation for Windows and for your particular system.



Uninstalling Walking with Dinosaurs

Walking with Dinosaurs can be uninstalled by selecting Start, Programs, BBC Walking with Dinosaurs, then the Uninstall icon.

Uninstalling

Walking with Dinosaurs can be uninstalled by selecting Start, Programs, BBC Walking with Dinosaurs, then the Uninstall icon.



Please select the topics below for more information.

"This Indeo video clip was created with a Pre Beta or Beta encoder. Please recompress with a release encoder."

B | B | C Quitting Walking with Dinosaurs **B | B | C**

You should always exit the programme using the Quit icon or the Quit option from the front-end menu screen. If however, you have used the commands Alt F4 or Esc you may find that you have lost your Windows Task Bar. This happens if your computer is running at a higher resolution to that used by the Walking with Dinosaurs programme. To restore your Windows Task Bar follow the steps below:

1. Hold down the Ctrl key and (with the Ctrl key still pressed down) press the Esc key.
2. This will bring up the Windows Start menu and from here you should select Settings.
3. From the Settings list select Control Panel.
4. When the Control Panel has opened double click on the Display icon.
5. Then click on the Settings Tab at the top.
6. You should see a section called Screen area. Click and drag the grey slider towards More until you are at your previous resolution setting. If you do not know what your previous resolution setting was then simply drag the grey slider all the way to the right.
7. Then click Apply followed by OK



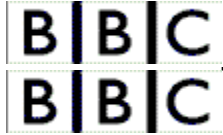
Make sure you have your Windows CD to hand.

Firstly remove the codecs. To do this you need to:

1. In Control Panel, double-click Add/Remove Programs
2. On the Windows Setup tab, click Multimedia, and then click the Details button
3. Click the Audio Compression and Video Compression check boxes to de-select them. When they do **not** have ticks against them, click OK
4. Click OK
5. You may need to restart your machine

Secondly:

1. In Control Panel, double-click Add/Remove Programs
2. On the Windows Setup tab, click Multimedia, and then click the Details button
3. Click the Audio Compression and Video Compression check boxes to select them, and then click OK
4. Click OK
5. You may need to restart your machine



Why do I get the following error message?

"This Indeo video clip was created with a Pre Beta or Beta encoder. Please recompress with a release encoder."

This error can appear on some systems, generally those fitted with ATI display cards, when the programme tries to display video.

You will be glad to hear that the videos on your CD-ROM were not compressed with a Pre Beta or Beta encoder, and in the majority of cases, the problem can be solved as follows:

1. From your Windows desktop, click Start then Run.
2. Type "DXDiag", without the inverted commas, and then click the "OK" button.
3. When the DirectX Diagnostic tools window opens, click the "Display" tab.
4. Click the button labelled "Disable" to the right of the words "DirectDraw Acceleration: Enabled".



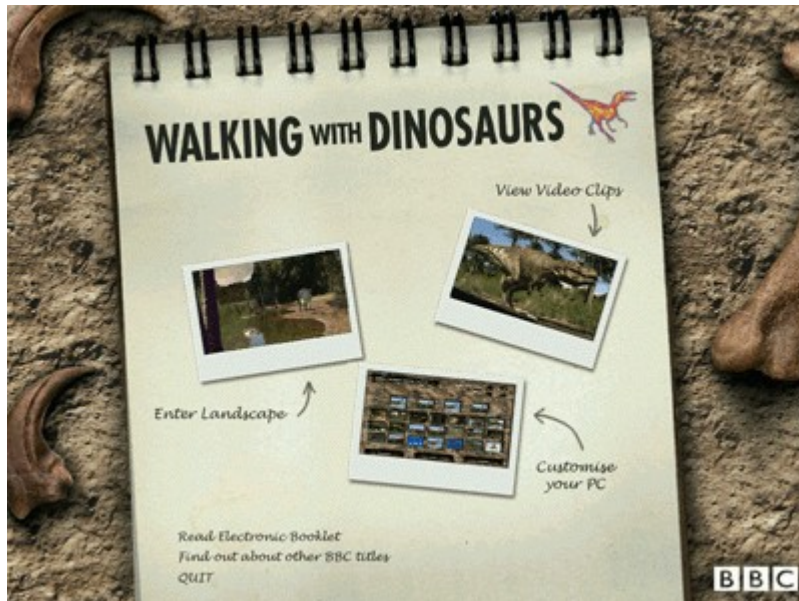
If you experience any problems after completing the installation procedure please check that your system and settings meet or exceed the minimum specification described earlier and refer to your Windows system documentation. Having checked your system, please attempt to install Walking with Dinosaurs again.

To do this you should first click the BBC Walking with Dinosaurs icon to remove the programme. You should now install the software again and make a note of the prompts displayed during the installation process. If you still have a problem and require further assistance you may call the BBC Multimedia UK Technical Support line on 0870 241 0623 or e-mail us using: [support@bbc.co.uk](#). Alternatively visit [http://www.bbc.co.uk/multimedia](#) for the latest product and support information on this and other BBC Multimedia titles. (Having clicked on either of these links you will need to close down this electronic booklet window and quit the Walking with Dinosaurs menu in order to see your email program or the web site).

When calling, please ensure you have a pen and paper at the ready and have made a note of any error messages displayed by your system. It will be extremely helpful if you have available any technical information about your PC configuration.

B|B|C The Main Menu Screen

B|B|C



This is the Main Menu Screen and it is from here that you access the other sections of the CD-ROM.

Click on the three pictures (or the text which accompanies them) to find out where they will take you.

Don't forget to click on the three text options towards the bottom left of the picture too for information on where they lead.

he Landscapes



This is the Landscapes menu screen which allows you to enter the mesozoic world and the Fact File.

In the mesozoic landscapes you can navigate through time and see how the terrible lizards lived and evolved during the Triassic, Jurassic and Cretaceous periods.

To access the landscapes simply click on one of the three coloured areas; **Triassic**, **Jurassic** or **Cretaceous**.

Click on the Cretaceous era on the picture above for more detailed information on this Landscapes section.

There are two brown icons at the top right of the screen. The first one will take you to the Fact File activity and the second one will take you back to the Main Menu screen. Click on each, in turn, on the picture for a brief description.

Electronic Booklet

Clicking this option will open this help file.

Other BBC Titles

Clicking this option opens a file containing information on other products from BBC Multimedia.

The Fact File

Click here to access the dinosaur fact file that is packed with information and a few questions for you too.

The Main Menu

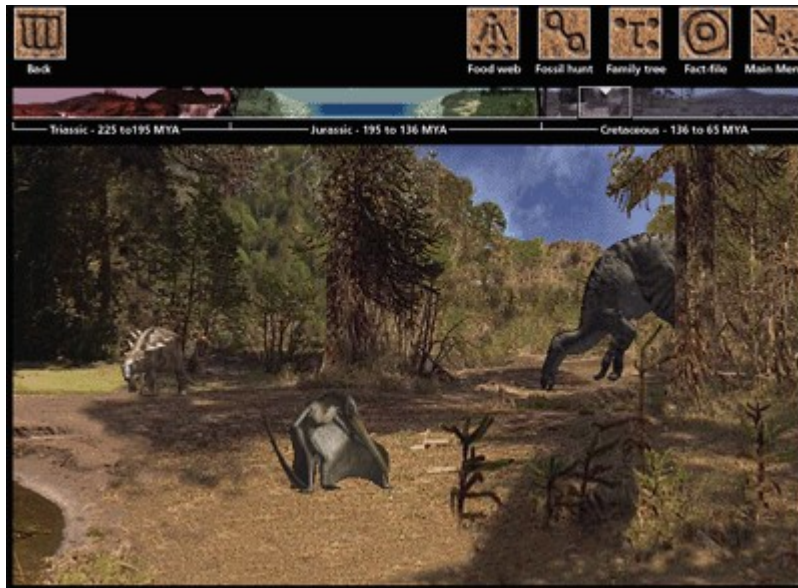
Click here to access the main menu screen from where you can enter different sections of the programme.

Quit

Click here to exit the Walking with Dinosaurs' programme and return to your Windows desktop.

B | B | C Navigating around the Landscapes

B | B | C



The landscapes of the mesozoic era are broadly split into the Triassic, the Jurassic and the Cretaceous periods. Here you will see the most significant of the creatures from each era in their natural habitat.

Use the [Timeline](#) at the top of the screen to move through the different periods. Alternatively you can click on any spot in the timeline to go straight there.

Roll your mouse around the landscape and you will see over certain areas it will change to a

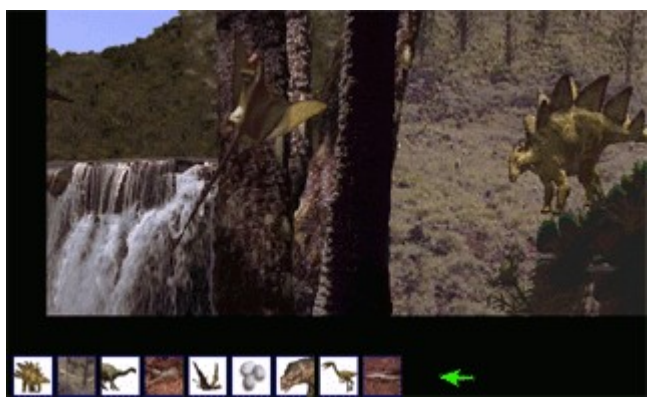
Click once with your mouse to activate a drop down list. Clicking on a dinosaur will bring up a [Pop-up window](#) such as, physiology, mating and social habits, diet and details about the fossil remains that revealed their existence to us. If you click on dinosaurs, bones, insects, eggs or foliage you will be given the option to [Add to cart](#) it for use in the Fossil Hunt or Food Web games.

Click on each brown icon on the picture above now to find out where it will take you.



When your mouse pointer changes to this symbol you are over an 'active' area. Clicking once with your mouse will open up a drop down list with various options.

Collecting Objects from the Landscapes



You can collect dinosaurs, bones, eggs, insects and foliage. Having chosen 'Collect' from the list your chosen item will appear beneath the landscape screen. You can collect a maximum of nine items at any one time. If you try to collect a tenth item a message will pop up informing you that there is no free slot left. If you wish to remove an item that you have collected simply right click on the one you want to remove.

You will need to have collected items from the landscape for both activities.

and

Back Icon

Click here to return to the Landscapes menu screen.

Timeline



This is the timeline. Simply click on the white square and drag it to the left or right to move through the different landscapes of the mesozoic era. Underneath this timeline you will see which era you have entered - Triassic to the far left, Jurassic in the middle or Cretaceous to the far right.

pecific Dinosaur Information

When you roll your mouse over a dinosaur your mouse pointer will change to a magnifying glass. Click with your mouse and a drop down list of features will appear. To select an item from the list simply click on it and information related to that topic will appear on the screen.

The list of features will vary slightly depending on the information that is available for each dinosaur.

The Food Web



The search for food is one of the primary instincts of all living creatures. Dinosaurs were little different. specimens from the landscapes and then establish the links between the flora of the period and the herbivores that fed on it.

Having collected foliage, insects and anything else that might eat or be eaten from the Landscapes you can then enter the Food Web section. You will see a screen that looks like the one opposite with instructions.

Click **OK** to remove the instruction sheet and start the game. Click on **OK** on the picture for further information.

The six brown icons at the top of the screen will take you to other areas of the Walking with Dinosaurs programme. Click on each one on the picture to find out which section it will take you to.

The Food Web Icon

This is the food web icon that you will have clicked on to access this Food Web section..

The Food Web – Getting Started



Click on **Triassic**, **Jurassic** or **Cretaceous**, to the top right of the screen, to choose the time period from which you collected your specimens.

Clicking on the *i* button to the bottom left of the screen will bring back the instructions for this section.

Drag your specimens to the different places in the food web which are marked with stones. When a specimen is correctly placed it will display new links.

If you find that none of the specimens collected can be placed, first make sure that they belong to the correct time period. If they do, you may have to go back to the Landscape to find the missing specimen.

he Fossil Hunt



All that we know of the dinosaurs is based upon the fossil evidence that has been found over the last two hundred years. This is your chance to emulate the great palaeontologists of the past.

pieces of bone from the landscapes. There are three pieces of bone to collect from each era, but some are not easy to spot, so you have to keep your eyes peeled.

Click **OK** to remove the instruction sheet and start the game. Click on **OK** on the picture for further information.

The six brown icons at the top of the screen will take you to other areas of the Walking with Dinosaurs programme. Click on each one on the picture to find out which section it will take you to.

The Fossil Hunt Icon

This is the fossil hunt icon that you will have clicked on to access this Fossil Hunt section.

The Fossil Hunt – Getting Started



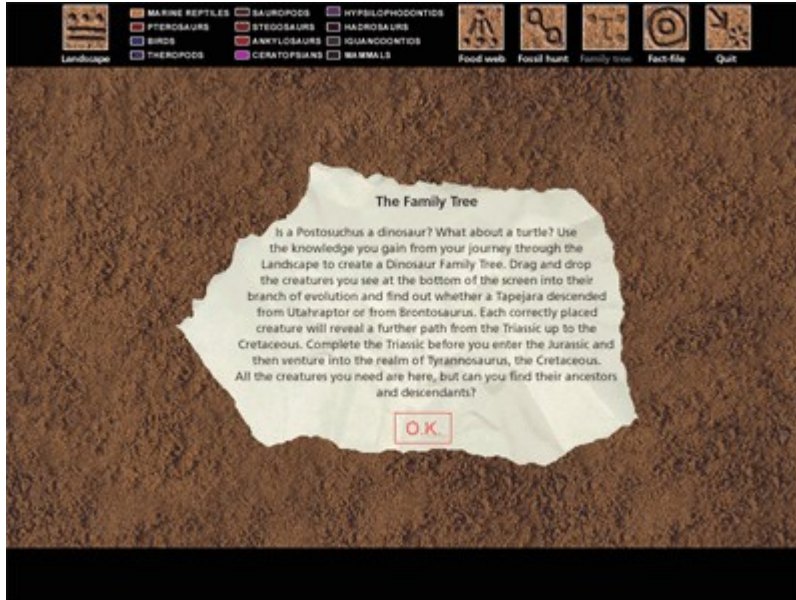
This screen shows a partial skeleton from either the Triassic, Jurassic or Cretaceous era. Make sure you select the time period you collected your bones from.

Clicking on the *i* button to the bottom left of the screen will bring back the on screen instructions.

Drag each bone to the skeleton and drop it where you think it should go. If you are right, it will fall in to place, if not it will snap back.

Once you've pieced the whole skeleton together a white line will appear around the skeleton so you know your skeleton is complete.

The Family Tree



Use the knowledge you gain from your journey through the landscapes to create a dinosaur family tree.

Having clicked on the Family Tree icon you will see a screen like the one opposite with instructions.

Click **OK** to remove the instruction sheet and start the game. Click on **OK** on the picture for further information.

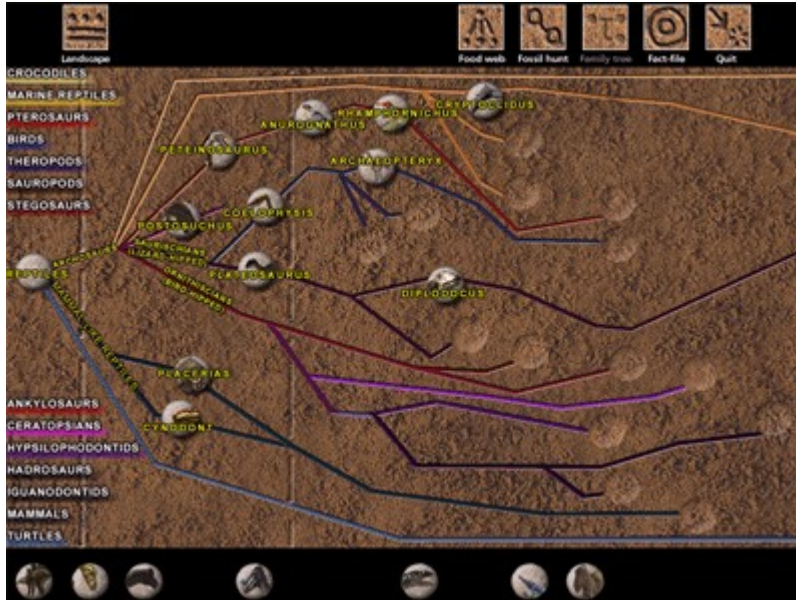
The key at the top middle of the screen represents the different types of creature.

The six brown icons at the top of the screen will take you to other areas of the Walking with Dinosaurs programme. Click on each one on the picture to find out which section it will take you to.

The Family Tree Icon

This is the family tree icon that you will have clicked on to access this Family Tree section.

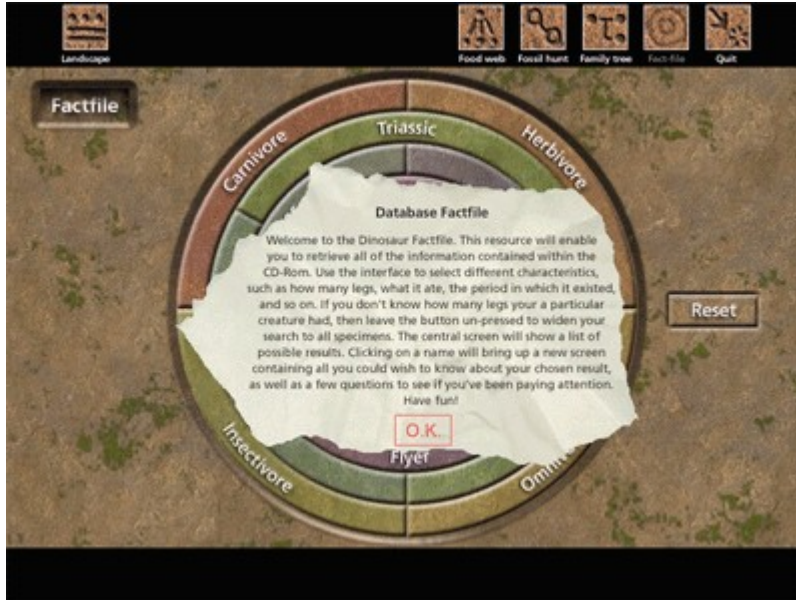
The Family Tree – Getting Started



Having clicked **OK** you are ready to start creating the family tree. Simply drag and drop the creatures you see at the bottom of the screen on to one of the light brown circles. If you match the creature with the correct branch of evolution a further path from the Triassic up to the Cretaceous will be revealed. If you are wrong the creature will snap back to the bottom of the screen - so you can select a different one.

Once all the branches of evolution are filled in and there are no more creatures available at the bottom of the screen you have completed the family tree.

The Fact File



All the information you could ever want is available within this handy Dinosaur Fact File.

The Fact File can be accessed from either the Main Menu screen or the Landscapes.

On entering this Fact File you will see a screen like the one opposite with instructions.

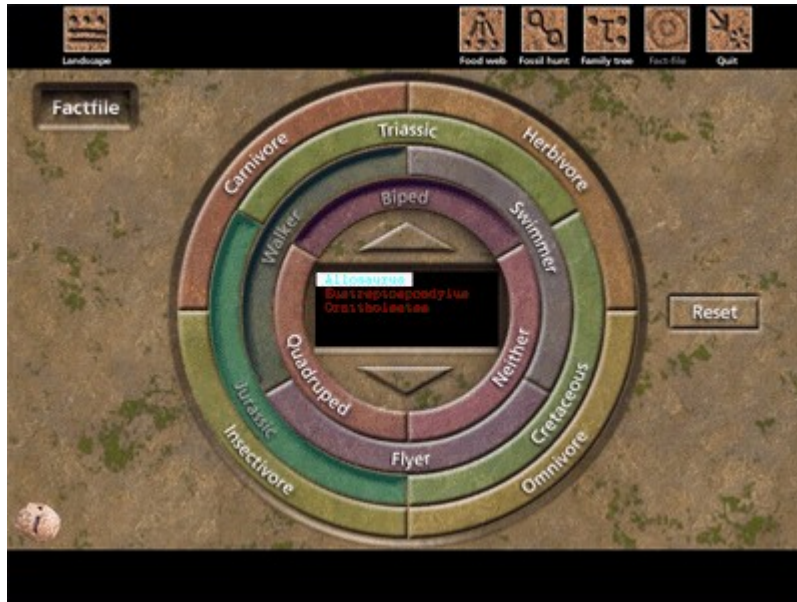
Click **OK** to remove the instruction sheet and start the game.

Click on **OK** on the picture opposite for more information.

The six brown icons at the top of the screen will take you to other areas of the Walking with Dinosaurs programme. Click on each one on the picture to find out which section it will take you to.

Using The Fact File

U



This is the database Fact File. Select different characteristics such as diet, locomotion, or time period by clicking on the different tabs. You can click on a tab again to switch it off. The programme will then display a list of specimens that match those characteristics.

Clicking on any of the specimens listed in the centre box will bring up a detailed page for that dinosaur.

To start a new search click on the **Reset** button to the middle right of the screen.

Clicking on the *i* button to the bottom left of the screen will bring back the on-screen instructions for this section.

The Fact File Results



Having chosen your dinosaur from the list you will enter a screen like the one opposite.

The six buttons to the top right of the picture give you information on these topics:

- Statistics**
- General**
- Diet**
- Fossil Finds**
- Social**
- Physiology**

Click on any of these topics to obtain audio, video or textual information.

To the bottom left of the screen is the name of your chosen dinosaur. You can use the arrows, labelled **Previous Dinosaur** and **Next Dinosaur**, to the left and right of this name box to scroll through the other dinosaurs that resulted from your search. To start a new search and return to the database Fact File click on the **New Search** button to the middle bottom of the screen.

Use the **True?** and **False?** buttons to the bottom right of the screen to answer questions about your chosen dinosaur that will appear in the box above – just to see if you've been paying attention!

The Fact File Icon

This is the fact file icon that you will have clicked on to access this Fact File.

The Main Menu Icon

This is the main menu icon. Clicking on this will take you back to the main menu screen.

The Quit Icon

This is the quit icon. Clicking on this will exit the Walking with Dinosaurs programme and take you back to your Windows Desktop.

The Video Browser



Gasp in awe as an allosaurus hunts, as T-Rex devours its prey or a cynodont lovingly tends to its young.

To select a clip just click on one of the pictures on the notepad.

Click on the **Next Page** arrow at the bottom of the notepad to scroll through all the pages and view the video clips available.

Having selected the video clip you would like to see and clicked on its picture you will go to the

To return to the main menu screen click on **Main Menu** at the bottom right of the screen.

laying a Video Clip



Click on the **Play** arrow below the video screen to start the video clip in a window, or to view at full screen click on the **Full Screen** icon to the far right.

Use the video controls below the video clip to **Stop** or **Rewind** the video.

You can scroll through the video clips by clicking on either the **Previous Clip** or **Next Clip** arrows at the bottom of the notepad. To return to the Video Browser main menu screen click on the **Video Menu** icon also at the bottom of the notepad.

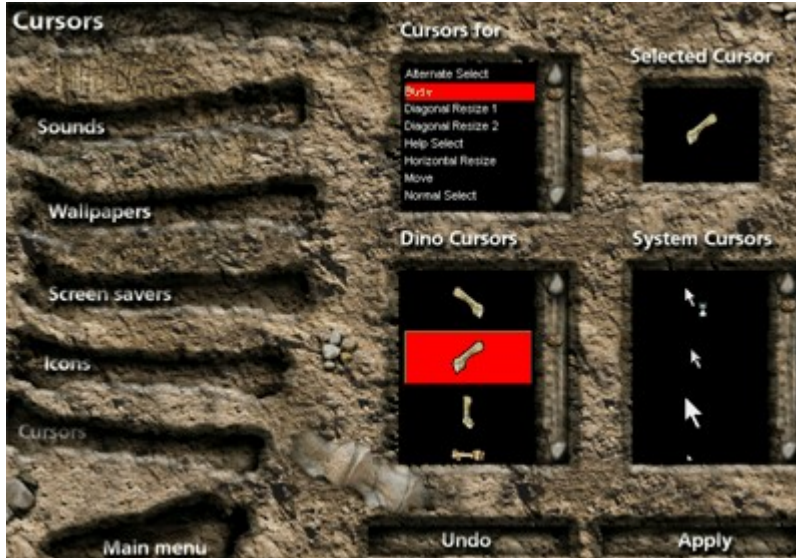
To return to the main menu screen click on **Main Menu** at the bottom right of the screen.



The desktop customiser enables you to apply:

Click on the white links above for detailed information on each.

he Desktop Customiser - Cursors



The cursor feature allows you to change the Windows system cursors. The screen shows four windows:

Cursors for shows a list of system cursors to which customised cursors can be assigned

Selected Cursor shows the current cursor used

Dino Cursors displays the customised dinosaur cursors available

System Cursors shows the current system cursors available

To set up new cursors, select an item from the **Cursor For** list. Your selection will be displayed in the Selected Cursor window. Then select a dinosaur theme cursor from the Dino Cursors window. Confirm your selection by pressing the Apply button to the bottom right of the screen. If you do not want to implement the change you have just made, press Undo to the left of Apply.

To replace a dinosaur theme cursor with a Windows cursor, simply choose the item you want in the System Cursors list and then click Apply. The cursor customiser also allows you to revert back to a choice of standard Windows cursors, following the instructions above. For help on how to restore system cursors from outside this programme, click [here](#).

To access a different customiser set up option, simply select one from the list to the left of the screen. To return to the main menu screen click on **Main Menu** to the bottom left of the screen.



This feature allows you to apply customised icons to your desktop. The screen shows four windows:

The **Selected Icon** window displays your currently selected icon

The **Target Programme Name** window shows a list of items to which icons can be assigned

The **Dino Icons** window displays the available Walking with Dinosaurs icons

The **System Icons** window shows the current system icons.

To install a Walking with Dinosaurs icon, select a **Target Programme** from the scrolling list and the current System icon will be displayed in the **Selected Icon** window. Then, select a Walking with Dinosaurs icon from the **Dino Icons** window, and you will see your chosen icon is now showing in the **Selected Icon** window. Confirm your selection by pressing **Apply** towards the bottom right of the screen. If you do not want to implement the selection you have just made, press **Undo** to the left of **Apply**.

You may find that you are unable to customise some Windows icons. This is generally due to the icons not having been installed in the way that Windows normally expects.

Use the **System Icons** if you want to return your icon to its original state, following the above instructions. To return icons to their original, from outside of this customiser, click [here](#) for help on how to implement this. To access a different customiser set up option, simply select one from the list to the left of the screen. To return to the main menu screen click on **Main Menu** to the bottom left of the screen.

he Desktop Customiser - Wallpapers

T



This feature allows you to customise your desktop wallpaper.

To set up a customised wallpaper, choose a wallpaper from the scrolling list. Your selection will be displayed in the **Preview Window** to the right.

Below the Preview Window select **Tile**, for a repeating pattern, or **Centre**, for a single image. To confirm your selection, press **Apply** at the bottom right of the screen or to deselect the wallpaper selection press **Undo**.

If you wish to return your customised wallpaper to its original setting click [here](#) for help on how to implement this. To access a different customiser set up option, simply select one from the list to the left of the screen. To return to the main menu screen click on **Main Menu** to the bottom left of the screen.

he Desktop Customiser - Screen Savers



The screen savers feature allows you to install Walking with Dinosaurs screen savers.

There are two screen savers to choose from; Still or Video Screen Saver. You can apply different settings to each. For more information on the various settings available for each screen saver, click on the white links below:

To select the period of time before the screen saver will be activated click on the grey up and down arrows on the **Wait Minutes** box below the **Preview Window**. To view your customised screen saver click on **Preview** to the far right of the screen. To confirm your selection click on **Apply** to the bottom right of the screen and to deselect the screen saver click on **Undo** to the bottom middle of the screen.

If you wish to return your customised screen saver to its original setting click [here](#) for help on how to implement this.

To access a different customiser set up option, simply select one from the list to the left of the screen. To return to the main menu screen click on **Main Menu** to the bottom left of the screen.

till Screen Saver



If you select the **Settings** option you will see a screen like the one opposite.

This screen saver feature allows you to edit a sequence of stills.

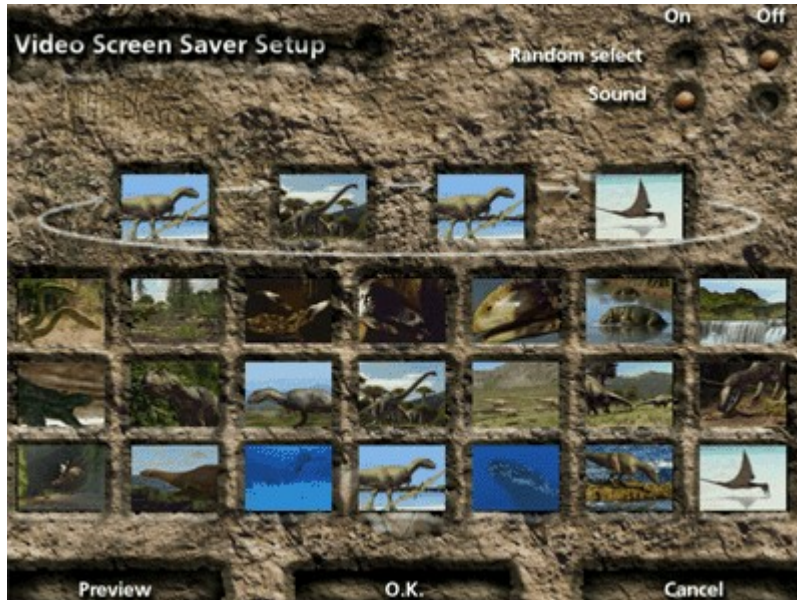
To create your own selection, select an image from the preview boxes towards the lower half of the screen by clicking on it, and then dragging and dropping the image into one of the ten selection boxes towards the top of the screen.

Repeat this task until you have filled the selection boxes.

Select whether you would like the **Random select** option or towards to top right of the screen and if you want to view your selection click on **Preview** towards the bottom left of the screen.

If you are happy with your still screen saver click on **OK** to the bottom middle of the screen to confirm your selection. To exit without making any changes to the settings, click on **Cancel**. Pressing OK or Cancel will take you back to the screen savers main menu screen where you can access other customiser set up screens by selecting an option from the list on the left. To go back to the main menu screen click on **Main menu** to the bottom left of the screen.

deo Screen Saver



If you select the **Settings** option you will see a screen like the one opposite.

This screen saver feature allows you to edit a sequence of video clips.

To create a unique set-up, select an image from the preview boxes towards the lower half of the screen by clicking on it, and then dragging and dropping the image into one of the four selection boxes towards the top of the screen.

Repeat this task until you have filled the selection boxes.

Select whether you would like the **Random select** option or and choose whether you wish to have **Sound** On or Off – both these buttons are located towards to top right of the screen. If you want to view your selection click on **Preview** towards the bottom left of the screen.

If you are happy with your video screen saver click on **OK** to the bottom middle of the screen to confirm your selection. To exit without making any changes to the settings, click on **Cancel**. Pressing OK or Cancel will take you back to the screen savers main menu screen where you can access other customiser set up screens by selecting an option from the list on the left. To go back to the main menu screen click on **Main menu** to the bottom left of the screen.

Random Play - On

If you choose to have the random play option turned On, the light grey selection box arrows will disappear and your selected images will appear in a random order on your screen.

Random Play - Off

If you choose to have the random play option turned Off, you will notice the light grey selection box arrows appear and this is the order in which your images will appear on your screen.



This feature allows you to associate dinosaur sounds with system events on your computer.

To install dinosaur sounds select a system event by clicking on an item from the **Event** window's scrolling list. You will hear the existing sound associated with that event.

Then select a new sound event from either the **Dino Sounds** or the **System Sounds** scrolling lists. Clicking on it will play the sound.

The **Currently Selected** window will display your currently selected sound. If you do not want any sound associated with a particular windows event, select None from the **Dino Sounds** window. Confirm your selection by pressing **Apply** to the bottom right of the screen. To exit without changes press **Undo** to the left of **Apply**.

The **System Sounds** window contains the default Windows sounds. Use these if you wish to change your customised sounds back to the Windows default sounds, following the instructions above. To return the system sounds to their original, from outside this programme, click [here](#) for advice.

To access a different customiser set up option, simply select one from the list to the left of the screen. To return to the main menu screen click on **Main Menu** to the bottom left of the screen.




You need to quit the Walking with Dinosaurs programme via the Main Menu screen using the **Quit** option, towards the bottom left of the screen.

The Main Menu icon is shown above and is located at the top right of every screen except the Customiser and Video Browser screens. For these two sections there is a Main Menu option towards the bottom right and bottom left of the screen, respectively.

NB: You should not exit the programme using **Alt F4** or **Esc**. If for any reason you do please see the [section](#).

Restoring your computer's Wallpaper

Click here  to open the Display Properties control, then follow steps 1 to 4 below.


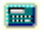



















1. Use the Up and Down arrows in the Wallpaper box to scroll through the Windows default Wallpapers.
2. Highlight the Wallpaper you wish to use as the default.
3. Click the Apply button.
4. Click the OK button.

Restoring your computer's Icons

Some icons can be reset by right-clicking on the icon in question and then choosing Properties from the drop down list which appears. You will then need to browse to where the executable is and select it.

The easiest way to reset your icons is to change them within the BBC Walking with Dinosaurs programme.

Listed below are the most common Windows default icons:

	Microsoft Access
	Calculator
	CD Player
	Character Map
	Control Panel
	Disk Defragmenter
	Microsoft Excel
	Floppy Drive
	Free Call
	Hearts
	Inbox Repair Tool
	Internet Explorer
	Mail (Email)
	Mine Sweeper
	MS DOS Prompt
	My Briefcase
	My Computer
	Network Neighbourhood
	Notepad
	Paint
	Phone Dialer
	Microsoft PowerPoint
	Printers
	Printers
	Program Folders
	Programs



Recycle Bin



Resource Meter



ScanDisk



Solitaire



Sound Recorder



System Monitor



Volume Controller



Windows Explorer



Windows Media
Player



Microsoft Word



WordPad

Restoring your computer's Cursors











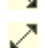
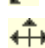


Click [here](#)

to open the Mouse control, then follow steps 1 to 4 below.

1. Click on the Pointers Tab.
2. Select the pointer you wish to restore to the Windows default so that it is highlighted blue.
3. The Use Default button will become active if you are not already using the Windows default.
4. Click on the Use Default button and your pointer will change to the Windows default.

If you wish to confirm you have selected the Windows default mouse pointers click [here](#) to see what would be the default on most machines.

Windows Default Cursor Settings

Normal Select		Arrow_1.cur
Help Select		Help_1.cur
Working in Background		Wait_1.cur
Busy		Busy_1.cur
Precision Text		Cross_1.cur
Text Select		Beam_1.cur
Handwriting		Pen_1.cur
Unavailable		No_1.cur
Vertical Resize		Size4_1.cur
Horizontal Resize		Size3_1.cur
Diagonal Resize 1		Size2_1.cur
Horizontal Resize 1		Size1_1.cur
Move		Move_1.cur
Alternate Select		Up_1.cur

Restoring your computer's Sound Settings

Click [here](#)

to open the Sounds control then follow steps 1 to 6 below.

1. Click on the Down arrow in the Schemes box.
2. Select the Windows Default Scheme by clicking on it.

[You may be asked if you wish to save your previous scheme, if you have not already saved it. If you do wish to save the previous scheme, then click Yes and type in a name for your previous sound scheme and click OK]

4. You will now see in the Schemes box the Windows Default that you selected earlier.
5. Now click Apply.
6. Then click OK.

If you wish to confirm you have selected the Windows default Sounds Settings click [here](#) to confirm the Windows default sound names on most machines.

Windows Default Sounds Settings

Windows

Asterisk	Chord.wav
Critical Stop	Chord.wav
Default Sound	Ding.wav
Exclamation	Chord.wav
Exit Windows	Tada.wav
Question	Chord.wav
Start Windows	The Microsoft Sound.wav

Windows Explorer

Empty Recycle Bin	Ding.wav
Start Navigation	Start.wav

Restoring your computer's Screen Savers

[Click here](#)

to open the Display Properties control
then follow steps 1 to 5 below.

1. Click on the Screen Saver Tab.
2. Click on the Down arrow in the Screen Saver box.
3. Highlight the Screen Saver you wish to use as the Windows default.
4. Click the Apply button.
5. Click the OK button.

